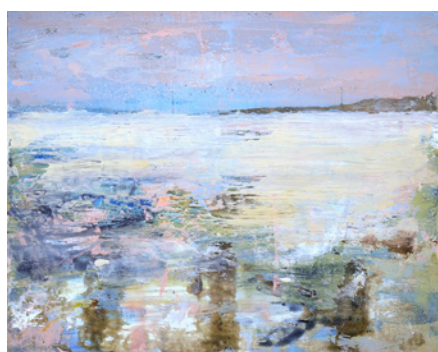


CONOR GALLAGHER SHORE

Above: Dublin Bay, 64 x 90 cm, oil on cardboard, 2022 (detail)

You are invited to the opening of
Shore by Conor Gallagher
an exhibition of recent paintings
on the third floor at the Chocolate Factory
at 2pm on Saturday, 2nd April, 2022
26 King's Inns Street, Dublin 1, D01 P2W7

RSVP info@conorgallagher.com



Winter Shoreline, 20 x 25 cm, oil on board, 2021

Conor Gallagher is a graphic designer and artist from Sligo, Ireland. Based at the Chocolate Factory, he has exhibited in The Irish Embassy in Paris; Læsø in Denmark; the Salon Prado in Madrid, Spain and Galerie Monin in Port-au-Prince, Haiti. This is his first solo show in Dublin.

He won Best Irish Artist at the National Open Art Exhibition in the UK in 2016 and he has exhibited at the RA Exhibition in London, the RHA Exhibition in Dublin and the RUA Exhibition in Belfast.

His work can be seen in the collections at Adare Manor, Office of Public Works, Ballinglen Arts Foundation, NUI Galway, Mastercard UK and Digicel and also in private collections in USA, Switzerland, Spain and Belgium.



APR 7-30
THURS, FRI & SAT
10AM-3PM
THE THIRD FLOOR
THE CHOCOLATE FACTORY
DUBLIN 1

Exhibition opening hours are Thurs, Fri & Sat, 10am-3pm from April 7th-30th. If you wish to view the exhibition outside these hours you can contact Conor at info@conorgallagher.com or 087-2340147

The Exhibition space is being designed in collaboration with Chocolate Factory neighbours, REIR Architects.

Refreshments courtesy of King of Kefir, Off the Cuffe, The Dublin Brewing Co & Blas Cafe with live music by Dabbledoo, all residents at the Chocolate Factory.



How to get there

By Luas: Get off at Dominick stop, walk to Parnell St, then turn right on to King's Inns St
Parking: There is a large multi-storey car park beside The Chocolate Factory on King's Inns St as well as parking on King's Inn Street.